

B747 Overhead Hardware Profile

1	Capt Light	Qty	Unit Cost	Total
	Pots	3	\$ 2,00	\$ 6,00
	Medium Knobs	5	\$ 14,95	\$ 74,75
	Custom Dual Knob	1	\$ 9,95	\$ 9,95
Subtotal				\$ 90,70

2	Hydraulic	Qty	Unit Cost	Total
	VRS45 Selector	4	\$ 8,95	\$ 35,80
	FDS-AN1K	8	\$ 6,00	\$ 48,00
	FDS-EM1 switch	4	\$ 59,95	\$ 239,80
	B2 Knob	4	\$ 14,95	\$ 59,80
Subtotal				\$ 383,40

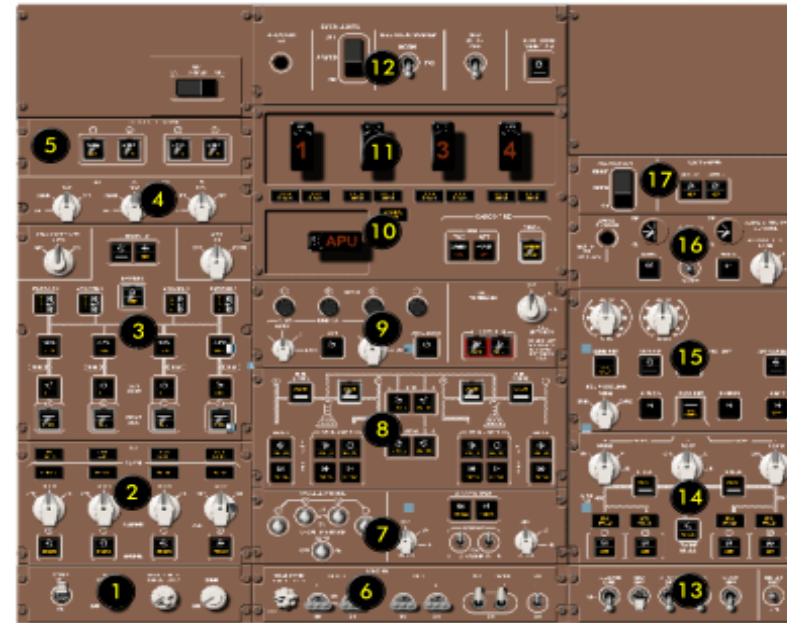
3	Comps	Qty	Unit Cost	Total	
	FDS-EM1 switch	19	\$ 59,95	\$ 1.139,05	<i>N/A</i>
	Switch Guards	5	\$ -	\$ -	
	VRS45 Selector	2	\$ 8,95	\$ 17,90	
	B2 Knob	2	\$ 14,95	\$ 29,90	
Subtotal				\$ 1.186,85	

4	INS	Qty	Unit Cost	Total
	B1 Knob	3	\$ 14,95	\$ 44,85
	VRS45 Selector	3	\$ 8,95	\$ 26,85
Subtotal				\$ 71,70

6	Ctr Light Panel	Qty	Unit Cost	Total	
	Custom Dual Knob	1	\$ 14,95	\$ 14,95	<i>(Not as shown!)</i>
	2 Pos Large Toggle	7	\$ 4,50	\$ 31,50	
	Toggle Guard	1	\$ 12,95	\$ 12,95	
Subtotal				\$ 59,40	

7	Anti-Ice	Qty	Unit Cost	Total
	FDS-EM1 switch	2	\$ 59,95	\$ 119,90
	2 Pos Large Toggle	7	\$ 4,50	\$ 31,50
	VRS45 Selector	2	\$ 8,95	\$ 17,90
	B2 Knob	2	\$ 14,95	\$ 29,90
Subtotal				\$ 199,20

11	Fire Panel	Qty	Unit Cost	Total	
	Fire Handles	4	\$ -	\$ -	<i>TBA</i>
			\$ -	\$ -	
Subtotal				\$ -	



8	Fuel	Qty	Unit Cost	Total	
	FDS-EM1 switch	20	\$ 59,95	\$ 1.199,00	<i>N/A</i>
	Switch Guards	5	\$ -	\$ -	
Subtotal				\$ 1.199,00	

9	Fuel Jett/Start	Qty	Unit Cost	Total	
	FDS-EM1 switch	4	\$ 59,95	\$ 239,80	<i>N/A</i>
	Medium Knob	1	\$ 14,95	\$ 14,95	
	Rotary (RENK)	1	\$ 6,95	\$ 6,95	
	ENG Start	4	\$ -	\$ -	
	B2 Knob	3	\$ 14,95	\$ 44,85	
	VRS45 Selector	3	\$ 8,95	\$ 26,85	
	Switch Guards	2	\$ -	\$ -	
Subtotal				\$ 333,40	

10	Fire Panel	Qty	Unit Cost	Total	
	FDS-EM1	3	\$ 59,95	\$ 179,85	<i>N/A</i> <i>TBA</i>
	Switch Guards	1	\$ -	\$ -	
	FDS-AN1K	9	\$ 6,00	\$ 54,00	
	Fire Handles	1	\$ -	\$ -	
Subtotal				\$ 233,85	

12	Accessory	Qty	Unit Cost	Total
	2 Pos Large Toggle	1	\$ 4,50	\$ 4,50
	3 Pos Large Toggle	2	\$ 4,50	\$ 9,00
	Toggle Guard	1	\$ 12,95	\$ 12,95
	Small Push Switch	1	\$ 2,00	\$ 2,00
	FDS-EM1 switch	1	\$ 59,95	\$ 59,95
Subtotal				\$ 88,40

13	FO Light Panel	Qty	Unit Cost	Total
	2 Pos Large Toggle	4	\$ 4,50	\$ 18,00
	3 Pos Large Toggle	2	\$ 4,50	\$ 9,00
Subtotal				\$ 27,00

14	Packs	Qty	Unit Cost	Total
	FDS-EM1 switch	7	\$ 59,95	\$ 419,65
	FDS-AN1K	4	\$ 6,00	\$ 24,00
	VRS45 Selector	3	\$ 8,95	\$ 26,85
	B2 Knob	2	\$ 14,95	\$ 29,90
Subtotal				\$ 500,40

15	Climate	Qty	Unit Cost	Total
	B3 Knob	3	\$ 14,95	\$ 44,85
	VRS30 Selector	3	\$ 7,95	\$ 23,85
	FDS-EM1 switch	9	\$ 59,95	\$ 539,55
	VRS45 Selector	1	\$ 8,95	\$ 8,95
	B2 Knob	1	\$ 14,95	\$ 14,95
Subtotal				\$ 632,15

16	Cabin Alt	Qty	Unit Cost	Total
	Medium Knob	1	\$ 14,95	\$ 14,95
	Rotary (RENP)	1	\$ 6,95	\$ 6,95
	FDS-EM1 switch	2	\$ 59,95	\$ 119,90
	3 Pos Large Toggle	1	\$ 4,50	\$ 4,50
	VRS45 Selector	1	\$ 8,95	\$ 8,95
	B2 Knob	2	\$ 14,95	\$ 29,90
	Small Push Switch	1	\$ 2,00	\$ 2,00
Subtotal				\$ 187,15

17	Cabin Alt	Qty	Unit Cost	Total
	FDS-EM1 switch	2	\$ 59,95	\$ 119,90
	3 Pos Large Toggle	2	\$ 4,50	\$ 9,00
	Toggle Guard	1	\$ 12,95	\$ 12,95
Subtotal				\$ 141,85

Hardware Package Total \$ 5.334,45

*This includes PRO-M Series Knobs FDS-K2 (Kit Form) switches Hardware as indicated
Panels are sold separately and list on the FDS/B747 webpage under the "PRO-M" Category*

All prices are Canadian dollars



FLIGHTDECK FDS - EM1 "PRO-M" Series Switch

PRO-M Series Switch with Quad LED